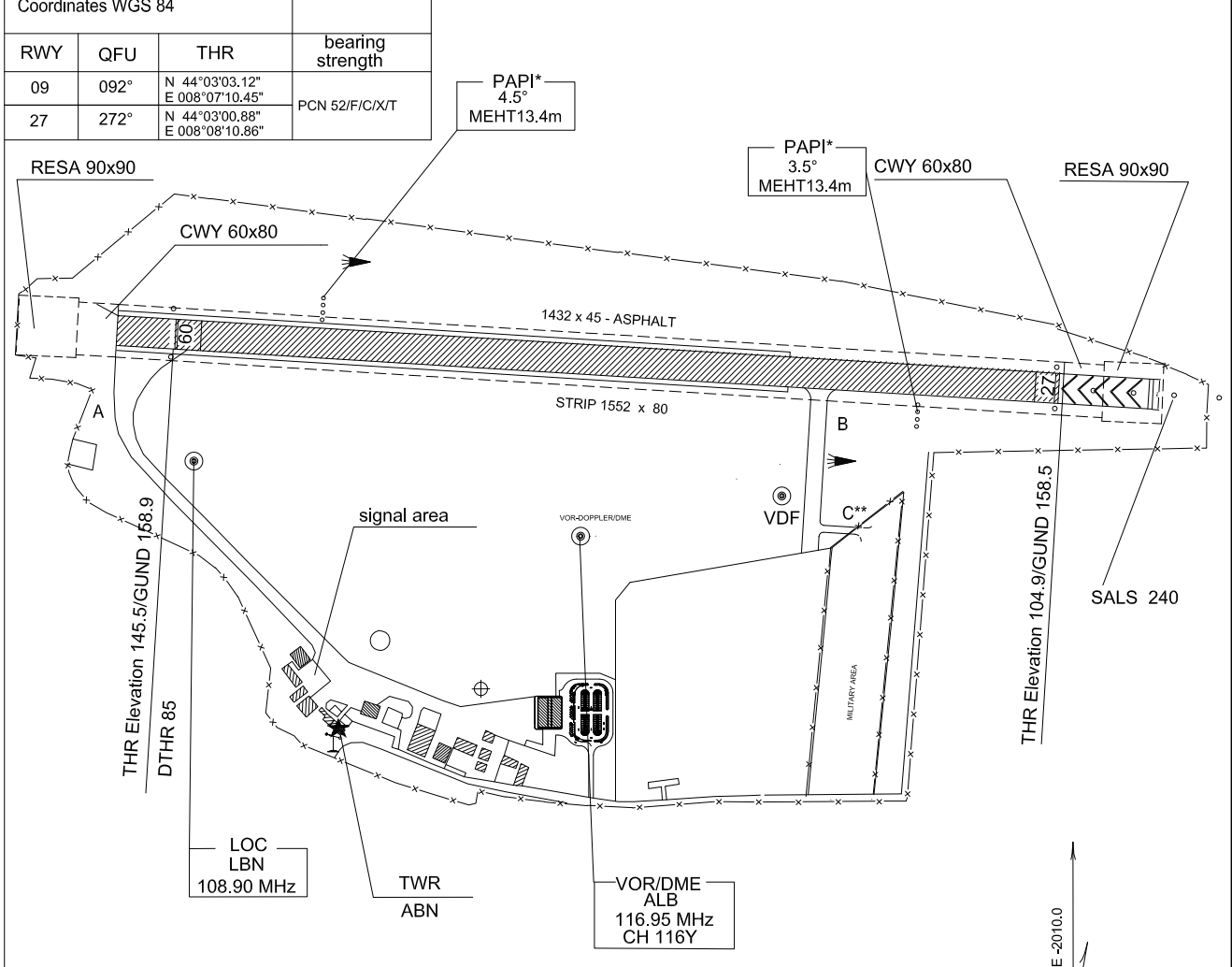
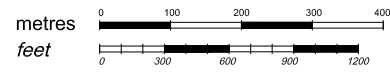


| | | | | |
|--|-----------------|-------------------|----------------|--|
| Bearings are magnetic Distances in metres Elevation in ft AMSL Coordinates WGS 84 | AFIS 123.850 | AD ELEV 149 | ALBENGA | |
| | | APRON ELEV 152 | | |



CHANGE: RWY 09/27 and TWY A bearing strength modified

| TWY IDENT | WIDTH | bearing strength |
|-----------|-------|------------------|
| A | 20 | PCN 39/F/C/X/T |
| B | 18 | PCN 18/F/C/Y/T |
| C | 10 | PCN 11/F/C/Y/T |

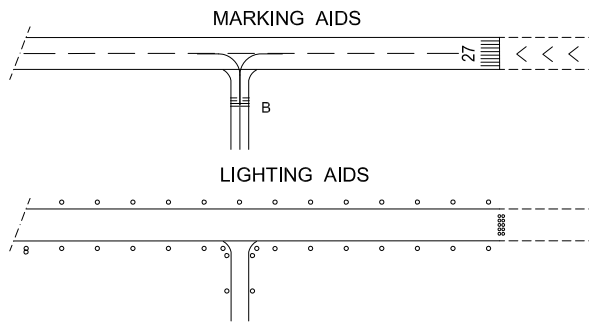
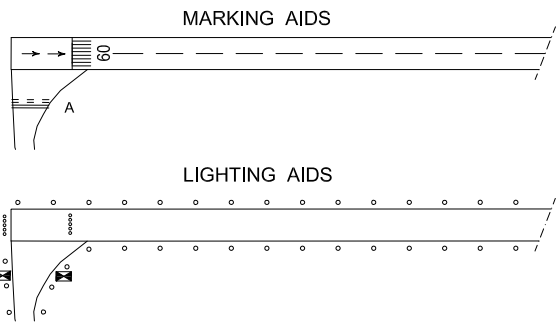


VAR +1° E -2010.0
Annual rate of change 6'E

REMARKS

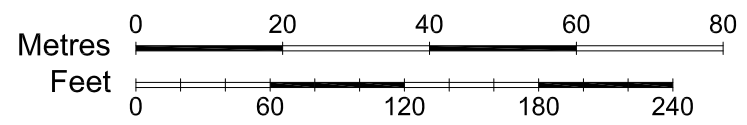
* System axis displaced 4° North of RCL.
Azimuth spread of the system reduced to 5° at left side of the RCL and 4° at right side RCL.
Obstacle protection surface: non-instrument.

** TWY "C" for military and State aircraft, rescue and fire-fighting services use only.



Bearing are magnetic
Distances in metres
Elevation in ft AMSL
Coordinates WGS 84

AFIS
123.850



AD ELEV
149

APRON ELEV
152

ALBENGA

LIMG

44° 02' 45" N

008° 07' 32" E

REMARK: Movements of aircraft with wing span greater than 18m must be conducted only with Marshall car assistance.

CIVIL APRON

LIGHTING BEARING STRENGTH

Edge: NIL

Apron 1
Surface: 5000 m² Asphalt
Strength: PCN 47/F/C/X/T

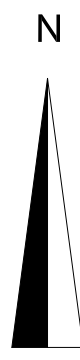
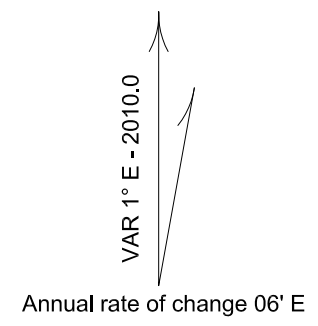
Apron 2
Surface: 5000 m² Concrete
Strength: PCN120/R/B/X/T

Apron 3
Surface: 5000 m² Grass
Strength: 5 SIWL

Apron 4
Surface: 9300 m² Grass
Strength: 5 SIWL

POINTS OF PARKING AREA

| STANDS | N | E |
|--------|----------------|-----------------|
| 21 | 44° 02' 43.68" | 008° 07' 31.75" |
| 22 | 44° 02' 43.92" | 008° 07' 33.07" |
| 23 | 44° 02' 44.17" | 008° 07' 34.39" |



CHANGE: New chart

